


“ The dedicated leadership of the Wilton Land Conservation Trust has assured the preservation in perpetuity of more than 840 iconic Wilton acres for generations to come. The Trust’s commitment to conservation and continuity is truly worthy of universal support.

-Ellen and Jim Kapustka, WLCT Members

# WILTON LAND CONSERVATION TRUST

Protecting Wilton’s Natural, Scenic,  
and Historical Landscapes

STAY CONNECTED  
WWW.WILTONLANDTRUST.ORG  
P.O. BOX 77  
WILTON , CT 06897  
(800) 983-3552  
INQUIRY@WILTONLANDTRUST.ORG

 This report is printed on partially recycled paper.



### Monarch Butterfly

In 2022, for the first time, the International Union for Conservation of Nature (IUCN) added the migrating monarch butterfly to its “red list” of threatened species categorized as “endangered” — two steps from extinct. The Wilton Land Conservation Trust conserves and protects biodiverse meadows rich with pollen and nectar sources to support pollinators such as bees, moths, beetles, birds, flies, and butterflies.

# WILTON LAND CONSERVATION TRUST



### Northern Harrier

A State of CT listed endangered species, this bird of prey hunts by flying low over fields and relies on well-managed meadows for hunting grounds and habitat. The Wilton Land Conservation Trust protects hundreds of acres of habitat that many of Connecticut’s endangered, threatened, and species of special concern need to thrive.

Photo by: Neal Heyano

2022  
ANNUAL  
REPORT

# LETTERS FROM...

## THE PRESIDENT

STEPHEN H. WHITE



We have had a good year at the Wilton Land trust. The reasons are many, but let me start with our wonderful board, our growing membership, our passionate Executive Director, and the generosity of the good people of Wilton. Land Conservation has always been important, but never more so than now. The people of Wilton see this need and are increasingly willing to support us in our efforts.

This year, the Town of Wilton is embarking on an Amenities Commission to focus on our town's wonderful open space, trails, and sports facilities. The Wilton Land Conservation Trust is proud to own or have easements on about 840 acres of the Town of Wilton, many of which have hiking trails and are open to the public. Others provide scenic beauty, preserve historical landscapes, and maintain our town's rural look and feel. We think Wilton is endowed with a broad range of amenities, and we welcome the decision to emphasize them.

We are working on improved mapping and identification of our trails, parks, and open spaces to make finding and accessing them easier. Wouldn't it be great to have a town-wide hiking map showing all the town's hiking trails, parking areas, trail markings, and connectivity? If this were England, you would see the pubs shown along the way too.

Want to give back to the community and support conservation in Wilton? We have a professional Executive director, but the WLCT is built around our awesome volunteers who do much of the work. Come, and join us on our workdays. We are looking for volunteers to work on our trails, remove invasives, and perform property maintenance. We also need communicators, photographers, and organizers. Most of us work at the Land Trust because it brings us satisfaction, but we also have fun along the way. I bet you will too.

Kind Regards,  
Stephen H. White  
President

## THE EXECUTIVE DIRECTOR

DAVID E. McCARTHY



I love connecting people with nature. Thanks to our generous community, thoughtful volunteers, and supportive annual members, I'm able to bring nature closer to the hearts of many. I've had the delight of singing and dancing with kids at Books and a Blanket and seeing families light up when they met a screech owl at our live raptor event. I've had the pleasure of introducing people to our vast trail networks, and the honor of working alongside our

volunteers to improve our nature preserves for people to enjoy and wildlife to thrive. I am very fortunate to be there when people's hearts open up to nature and lucky to work in such a wonderfully supportive community.

This year we led by example and did all we could to demonstrate that open space is for everyone, stewardship is for all ages, and conservation matters. We planted hundreds of native trees thanks to our mighty volunteers. We added identification signage alongside our freshly planted trees to encourage people to plant native species in their yards. Planting natives is vital for preserving biodiversity and a much better option than foreign landscaping plants.

Thankfully, our founders had the foresight to establish the Wilton Land Conservation Trust and start preserving the beautiful forests, meadows, and rural vistas that make our town so scenic. Today, the 840 acres of protected open spaces owned and managed by the WLCT conserve biodiversity, provide habitat for species in decline, contribute to healthier lifestyles, and afford many outdoor amenities for Wilton residents. Our preserves are places for people to connect with nature, be inspired, and enjoy the outdoors with friends and family. Nature has something for everyone, and I love helping people get out there to enjoy it.

It's with great thanks to the Wilton community that I get to connect people with nature and restore native habitats across our wonderful town. Thank you for supporting the Wilton Land Conservation Trust and for making our work possible!

Sincerely,  
David McCarthy  
Executive Director



# WILTON'S LAND TRUST

CONSERVING AND PROTECTING THE LANDS AND WATERS THAT SUPPORT LIFE

As Wilton's leading conservation organization, we are a dynamic, inclusive, and educational 501c3 community-focused nonprofit organization dedicated to protecting, enhancing, and conserving open space in Wilton.

The WLCT depends solely on the support of its members to carry out its critical work.

“Open space is a hallmark of Wilton's country lifestyle. As the town grows, it is reassuring that the Wilton Land Conservation Trust is strong, thriving, and a major force in protecting and sustaining our environment. Thanks to the WLCT, residents can rest assured that our open spaces will be protected, not just for the people, but for our wildlife and native plant communities as well. -John and Peg Ottman, WLCT Members

### CONSERVATION EFFORTS

The WLCT is dedicated to protecting, enhancing, and conserving open space in Wilton. Our protected lands preserve Wilton's historical landscapes, maintain Wilton's rural character, increase continuous wildlife habitat, and protect water quality. Conservation protects species from extinction, mitigates climate change, and improves air quality. We raise funds to purchase the land outright and work with landowners to bequeath, donate, or place a conservation easement on their land.

### WILDLIFE HABITAT RESTORATION

With a deep concern for Wilton's environment, we're actively restoring native habitats across our 119 separate parcels totaling 840+ acres in Wilton. We're enhancing ecosystems by integrating the latest science and best practices into our land management, restoration projects, and educational community programs. Together, we're working toward a vision of native rich wildlife habitat, prolific pollinator habitat, protected watercourses, healthier forests, and increased environmental awareness.

### NATURE PRESERVES & OPEN SPACE AMENITIES

We know that the best way to experience nature is to get out there and enjoy it. WLCT's preserves offer open space amenities to the Wilton community, such as hiking, fishing, birding, jogging, sightseeing, picnicking, and nature preserves for the WLCT to hold its recreational and educational programs. The benefits of conservation go far beyond the environment. WLCT's conserved open spaces provide residents access to cleaner air, cleaner water, and healthier lifestyles.

**EXECUTIVE DIRECTOR**  
David E. McCarthy

**VICE PRESIDENT**  
Roger R. Valkenburgh

**TRUSTEES**  
Brett D. Amero  
Scott M. Bogan  
Meaghan Donovan  
Jay M. Dulberg  
Christina Duncan  
Kaki Hughes  
Paige Kellogg  
Frank Mabley  
William L. Maxwell  
Donna Merrill  
Justin Phillips  
Robert E. Sollmann Jr.

**TRUSTEES EMERITUS**  
Anthony P. Grassi  
Thomas M. Sinchak  
Robert H. Russell, Jr.  
2000-2022

**PRESIDENT**  
Stephen H. White

**SECRETARY**  
Mark Rice

**VICE PRESIDENT**  
Craig E. Johnson

**TREASURER**  
Michael E. Foster

# STEWARDSHIP

## MAKING A DIFFERENCE: WHY STEWARDSHIP MATTERS

Scientists say we're living in the Anthropocene epoch, a time when human activity has significantly and negatively impacted the planet's climate and ecosystems. Your Land Trust is dedicated to protecting and improving Wilton's natural resources. This year, the WLCT has significantly increased its efforts to restore native forest and wildlife habitats across Wilton. Thanks to the incredible support of our members and volunteers, we're:

- Preserving open space!*
- Removing invasive species!*
- Supporting endangered wildlife!*
- Protecting water quality and habitat!*
- Restoring native forests and meadows!*
- Building a community centered around nature!*



## STEWARDSHIP SUNDAY SERIES: BIODIVERSITY FOR ALL AGES



Introduced in 2020, WLCT's flagship educational workday program has taken off! Thanks to the incredible support of our members and volunteers, we're restoring native habitat, protecting biodiversity, and building a stronger community centered around nature.

**"COMMUNITY AND CONSERVATION ARE CONNECTED."**

*David McCarthy, Executive Director*



## RESTORING BIODIVERSITY TO: SCHENCK'S ISLAND

In 2022, the WLCT kicked off its multi-year endeavor to restore native plant habitat on its section of Schenck's Island: a critical first step to preserving biodiversity. With support from our members, volunteers, and community partners, we're nurturing a living landscape for birds and animals on the island, as well as aquatic and amphibian life in the Norwalk River. We removed tons of invasive species and planted over 125 native trees and shrubs along the forested river walk!



photo by Doug Bogan

## WLCT'S STEWARDSHIP COMMITTEE: REVITALIZED

Thanks to the leadership of its recently appointed Chair, Justin Phillips, WLCT's all-volunteer Stewardship Committee has been rejuvenated. Our mighty stewardship committee members are the heart of WLCT's stewardship efforts. Throughout the year, the committee works to ensure the health of our preserves and the safety of our trails. No matter the weather or temperature: they're removing invasive species, cutting non-native vines, and clearing trails.



## ENHANCING NATIVE HABITAT: ACROSS WILTON

The WLCT cares deeply about the condition of Wilton's environment; it's committed to restoring ecosystems, habitats, and native biomes within its 840+ acres of protected open space.

In 2022, with great thanks to its members and volunteers, the WLCT removed invasives and planted natives across its major preserves:

### FORESTS

*Maple, Willow, Service Berry, Aster, Winterberry, Highbush Blueberry, Mountain Laurel*

### WETLANDS

*Silky Dogwood, Summer Sweet, Cedar, Swamp White Oak*

### MEADOWS

*Eupatorium perfoliatum, Rudbeckia hirta, Symphyotrichum patens, Spice Bush*

*In partnership with Highsted and CT NOFA's Ecotype Seed Project, we're proactively preserving New England's native meadow wildflowers. Seeds are collected, cultivated, and replanted to restore native pollinator habitat.*



## WILTON CORPORATIONS STEP UP: AND PARTNER FOR THE ENVIRONMENT

### OUTDOOR SPORTS CENTER

The Outdoor Sports Center closed its doors for a day to sponsor a corporate workday at Schenck's Island. Nearly 30 employees worked to remove invasive plants and plant about 45 blueberry bushes.

### ASML

ASML sponsored a corporate workday with the WLCT to steward and expand WLCT's Schenck's Island blueberry fields. A team of 30 ASML employees removed invasive species, planted 20 blueberry bushes, and spread four cubic yards of mulch.

“What adds to the joy of living in Wilton are its abundant open spaces and walking trails. We owe a big thank you to the Wilton Land Conservation Trust for maintaining, preserving, and expanding these spaces - as it has done at 183 Ridgefield Road! Let's all support the Trust.”

*-Paul Evanson, WLCT Member*

## THANK YOU 2022 VOLUNTEERS!

Because of you, we're tackling more ground than ever to protect water quality, restore trails, and support wildlife.

**350+ VOLUNTEERS!**  
**1500+ HOURS**  
**225+ NATIVE TREES PLANTED!**

### GET INVOLVED:

The WLCT depends on its membership support and volunteers to keep its preserves healthy and accessible. Consider supporting our critical work and giving back to our community.

“ASML is proud to support the Wilton Land Conservation Trust. As a global technology leader and employer, ASML believes that when the community thrives, we thrive. The environmental preservation and education the WLCT provides is an invaluable asset to our community.”

*-ASML, WLCT Member*

“The Earth is all we really have. We must be responsible stewards of it.”

*-Dr. Mark and Linda Rubinstein, WLCT Members*

# ENVIRONMENTAL

## PROGRAMMING

## LEADERSHIP

### BUILDING A COMMUNITY AROUND NATURE: MADE POSSIBLE BY YOUR MEMBERSHIP

We love nature; we love Wilton, and we love connecting the two. Over the past year, we've developed, hosted, and partnered on a wide variety of nature-focused recreational, educational, and experiential programs to bring families together outdoors.

#### TREKKING TOGETHER



We are hiking across Wilton in partnership with the Woodcock Nature Center.

#### BOOKS AND A BLANKET



We are connecting young ones with nature, books, and recycling, in partnership with the Wilton Library and Wilton Go Green.

#### BIRDS OF PREY



We are bringing the secret lives of New England raptors front and center in partnership with the Sharon Audubon Center.

#### TURTLE TIME



We are peeking into the mysterious lives of turtles and tortoises in partnership with The Turtle Room.

#### WALK YOUR LAND TRUST



We are showcasing the hidden beauty preserved by local land trusts in partnership with the land trusts of lower Fairfield County.

#### POETRY IN THE PRESERVE



We are blending art and the natural environment in partnership with the Wilton Library and the CT Poetry Society.

### INSPIRING THE NEXT GENERATION OF ENVIRONMENTAL LEADERS

The natural environment faces many threats, and soon enough, it will be up to the next generation to address them. Through our educational programs, stewardship Sundays, and professional internships, we educate and inspire Wilton's youth to become more involved, take action, and help address super wicked problems like climate change.



### 2022 INTERN & FIELD RANGER: PROFESSIONAL OPPORTUNITIES FOR WILTON'S YOUTH

#### GAVIN FUSCO



#### 2021-2022 FIELD RANGER

Gavin started as a volunteer and was quickly hired as WLCT's Field Ranger in 2021. He worked diligently to improve the trails, meadows, and forests we all cherish. Gavin led workshops, ran workdays, trained interns, and enriched the Wilton Community. A strong and passionate leader, he will take all of his experience from the WLCT to Rensselaer Polytechnic Institute in Troy, New York.

#### JILL ROBERTS



#### 2021-2022 INTERN

Jill joined the WLCT in 2021, and she tended to our new habitat plantings, supported our programs, and maintained our American chestnut tree orchard. With a strong passion for the environment, she fostered a community centered around nature and brought her experience to her Senior Year at Wilton High School.

### RECOGNIZING ENVIRONMENTAL LEADERSHIP

The WLCT recognizes and fosters environmental leadership in Wilton's Youth. We honor two exceptional students yearly with awards at the High School Academic Awards Program.

#### 2022 E. DAN CAPPEL SENIOR SCHOLARSHIP AWARD OF \$1,500



David McCarthy, Executive Director of the WLCT, presented Gavin Fusco with WLCT's 2022 E. Dan Cappel Senior Scholarship Award of \$1,500 for his leadership

and willingness to preserve Wilton's biodiversity.

*"I'm overjoyed and honored to receive the Wilton Land Conservation Trust's Senior Scholarship Award."*  
- Gavin Fusco

#### 2022 JUNIOR BOOK AWARD



David McCarthy, Executive Director of the WLCT, presented Jill Roberts with WLCT's 2022 Junior Book Award for her outstanding environmental leadership and commitment to the Wilton

community.

*"Receiving the Wilton Land Conservation Trust's Junior Book Award is a great honor."* - Jill Roberts

# COMMUNITY

## CONNECTION

### ANNUAL MEETINGS: OPPORTUNITIES TO LEARN MORE ABOUT YOUR LAND TRUST

**2022** At the 57th Annual Meeting of the WLCT, we celebrated a year of bringing the Wilton community closer to nature. The highlight of the evening was our featured guest speaker, Dr. Mark C. Urban, who presented on climate change, and how it's affecting Connecticut's wildlife.

**2023** You are cordially invited to the 58th Annual Meeting of the WLCT, where we will hear from our President, Treasurer, Committees, and Executive Director. The meeting will be held remotely, via zoom, on Wednesday, February 22nd, at 7:00 pm.

The highlight of the evening is our guest speaker, Geordie Elkins, Executive Director of Highstead. His talk will illuminate the importance of creating native habitats, preserving biodiversity with the Ecotype Project, large and small-scale habitat protection and restoration, and much more. Please RSVP at [wiltonlandtrust.org](http://wiltonlandtrust.org); We hope you'll join us.

## CHESTNUT MEADOWS NATURE PRESERVE:

In 2020, the Wilton Land Conservation Trust purchased 183 Ridgefield Road; with great thanks to its friends' and members' financial support and the award of a \$707,000 Open Space Acquisition Grant from the State of Connecticut.

### OPENING THE PRESERVE

In 2022, 183 Ridgefield Road was officially named Chestnut Meadows by George and Carol Bauer, angel investors to the Save 183 campaign. Excited for families, hikers, and birders alike to visit and explore the Nature Preserve, the WLCT is developing the plans needed to implement its vision for the newly named 13.5-acre Chestnut Meadows Nature Preserve.

### POLLINATOR & WILDLIFE HABITAT

Meadows are early successional habitats that provide food and shelter for birds, butterflies, bees, reptiles, and other wildlife. These habitats are declining across Connecticut. The WLCT is actively maintaining, restoring, and optimizing the conditions for wildlife to thrive across the historical property.



### THE DANIEL OFFUTT BARN

In 2021, the WLCT Building Committee commenced the antique barn's reconstruction at Chestnut Meadows. The 19th-century post and beam barn is near completion and features vaulted ceilings, a spacious meeting room, two lavatories, a small office, and an energy-efficient heating and cooling system with an option for solar. The WLCT expects to complete the barn in 2023.



### AMERICAN CHESTNUT TREE ORCHARD

Together with the American Chestnut Foundation and our wonderful community, we expanded our Germplasm Conservation Orchard from 10 to 40 native American chestnut trees to help save the American chestnut tree from the brink of extinction. This ambitious scientific project aims to return the iconic American chestnut tree to its native range.

## REFLECTION

### INCREASED SUPPORT FOR WLCT'S MISSION

#### TRUSTEES

This year, the WLCT appointed three Trustees to the Board: Christina (Tina) Duncan, Katharine (Kaki) Hughes, and Justin Phillips.

#### MEMBERS

The 2021-2022 giving year marks the highest unrestricted charitable giving on record! We are very fortunate to have such generous members committed to our Mission. Thank you!

“ The Wilton Garden Club has a long history of contributing to community organizations that reflect the Club's cornerstones of education, conservation, preservation, and beautification. At the forefront of these organizations is the Wilton Land Conservation Trust with its strong ongoing commitment to the careful stewardship of Wilton's open spaces and dedication to promoting and protecting the web of life. - The Wilton Garden Club, WLCT Member

## REMEMBERING BOB RUSSELL

On June 18, 2022, Wilton lost an esteemed and revered citizen. For decades, Bob served in key fiduciary and leadership roles for the Wilton Land Conservation Trust, as well as for the Wilton Library and the Wilton Historical Society. He also served in Town government, on the Board of Finance, and as First Selectman, from 1993 to 1999.

Under Bob's leadership as First Selectman, more open space was conserved in Wilton than has ever been achieved before or since. He convened a Land Advisory Committee of concerned citizens and worked to preserve properties owned by the Sackett and Black and Belknap families, acreage adjacent to the Wilton Railroad Station (now site of the Teen Center), the Ambler Farm, and Millstone Farm.



Robert Russell with David McCarthy, Executive Director, standing in front of the under-construction Daniel Offutt Barn at Chestnut Meadows

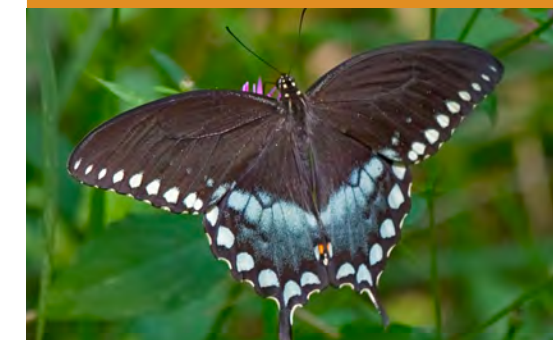
After his retirement as the first Selectman in 1999, Bob served as a Trustee of the WLCT and continued his efforts to preserve and protect our open spaces. Bob loved Wilton's agrarian past and rural character; he devoted himself to preserving the Town's history and historical landscapes. He and Carol generously gave their time, talent, and treasure to the WLCT. His gifts and legacy will never be forgotten.



As partners in the Pollinator Pathway of Wilton, we're excited to promote a spectacular native flower you can plant in your garden to attract and feed a beautiful butterfly.



Spicebush (*Lindera benzoin*) is a host plant for Swallowtail butterflies. Its clusters of greenish-yellow flowers are tiny and aromatic, and many species of birds favor its fruit.



The spicebush swallowtail (*Papilio troilus*) is one of the most beautiful and interesting swallowtails. It feeds on the nectar of spicebush flowers. Then, it lays its eggs on the leaves that serve as food for emerging hatchlings.

# MEMBERSHIP

SUPPORTING OUR CRITICAL MISSION

MEMBERS 2021-2022



## PLANNED GIVING: CREATING YOUR CONSERVATION LEGACY

Slaughter Fields - 17 acres donated to the WLCT in 1991



**CORPORATE  
ENGAGEMENT**



**LAND**



**ESTATE  
PLANNING**



**APPRECIATED  
ASSETS**

— GIFTS OF —

## WLCT ENDOWMENT FUND

We have established the WLCT Endowment Fund to help sustain our critical mission long into the future. Create a lasting legacy by including the WLCT Endowment Fund in your long-term plans.

## DESIGN YOUR CONSERVATION LEGACY

The WLCT is eager to work with you to support your conservation goals and create your lasting legacy. Your planned gift can help us continue addressing issues like clean water, wildlife habitat, open space, biodiversity loss, and our changing climate.

To make special arrangements for donations and start designing your conservation legacy today, visit our website to learn more and get in touch with our Executive Director, David McCarthy, at (800) 983-3552.



Stewardship Sundays on Schenck's Island

## WLCT MEMBERS CARE ABOUT WILTON'S ENVIRONMENT

Annual membership fuels our critical work of safeguarding Wilton's unique natural, scenic, and historical landscapes through conservation and stewardship. The WLCT's efforts to preserve open space, protect biodiversity and restore wildlife habitat depend solely on the support of its members.

## DONATE TODAY

Fund conservation in Wilton and help us take the ambitious steps necessary to address climate change and biodiversity loss.

## BECOMING A MEMBER IS EASY

Giving online or via mail is secure and immediately puts your support into action. A gift today makes you a 2022-2023 member. The WLCT is a 501(c)(3) charitable nonprofit; most donations are tax-deductible.

## MEMBERSHIP BENEFITS

WLCT membership benefits bring you close to the impact your generous gift has on Wilton's environment and community. Members receive updates, eNewsletters, and invitations to programs and special events.

Spotted Turtles (*Clemmys guttata*) were once considered the most common turtle in the northeast. They are now endangered due to loss of habitat.



### LUMINARY - \$10,000 +

The Albanese Family  
Woodson and Christina Duncan  
Daniel E. Offutt, III Charitable Trust  
Mark and Linda Rubinstein

### LEADER - \$5,000 - \$9,999

The Henry Foundation  
Craig Johnson and Kimberley Young  
Jim and Ellen Kapustka  
Mark and Amy Rice  
Robert and Kathryn Sollmann  
Chris and Catherine Stroup  
Roger and Ginny Valkenburgh

### BENEFACTOR - \$2,500 - \$4,999

The Amadeo Family  
Mark Broach  
Peter Brooks  
Paul and Carol Evanson Family Foundation  
Jennifer and Matthew Gabrielson  
Jeffrey Headden  
Jennifer Morello  
Robert and Carol Russell  
Jessica Skipper

### CONSERVATIONIST - \$1,000 - \$2,499

Jane and Moses Alexander  
Anonymous  
Toni Boucher  
Timothy and Laura Callahan  
Wilton Garden Club  
The Creveling Family  
Douglas Cullen and Eva Pao  
Jennifer and Geody Davatzes  
Minette and Lap Dog David  
The Fleitz Family  
Janet and Michael Foster  
Russell J. Handelman  
Judy and Hal Higby  
Farah Masani  
Elizabeth and Gerald O'Connell  
John and Peg Ottman  
Betsy and Steve Pettit  
Al and Sue Ravitz  
Carrie and Ben Sanders  
Andrea Riina and Rodney Stenlake

### STEWARD - \$500 - \$999

Geoffrey and Lynn Ashworth  
Steve and Emily Blass  
Scott Bogan  
Goldman Sachs \*  
Rob and Meg Campbell  
William and Chrissy Caragnaro  
John and Susan Christian  
Thomas Clark  
Daniel and Rebecca Darst  
Chris and Carol Dubrowski  
Ken and Pam Fadner  
Andrew P. Gaillard  
Robert and Barbara Gault  
Thomas B. Harris  
Fairfield County Bank  
Michael and Olga Kagan  
Pamela Hovland & Steve Lawrence  
John and Sherry McReynolds  
James and Kim Mellin  
Outdoor Sports Center  
Rob and Cynthia Pemble  
Point Break Tacos  
The Ruffel Family  
Mathias and Bonnie Rumilly  
Karen and Warren Saltzman  
Kathleen Schena: In Honor of John and Peg Ottman  
The Smolenack Family  
David Wecker & Julie Rudnicki

### PATRON - \$250 - \$499

The Albanese Family  
Jim and Kathryn Alonso  
John D. Ambler  
David and Betsy Bell  
Benevity  
Joseph and Sue Berland  
Jane and Ed Bescherer  
Gladys S. Blundin  
Bill and Nancy Brautigam  
Joanna Buchanan  
Winifred Chesley  
Michael Conway  
Donna and Michael Correale  
Keith and Laura Coutant  
Charles E. Cunningham  
Alper and Asli Daglioglu  
Dailykarma Foundation  
Vitold and Susan de Stronie  
Nancy and Karl Dolnier  
Meaghan Donovan  
Keith and Jennifer DeAngelis  
Matthew Dellapina  
David and Marjorie Deptereos  
The DiCenzo Family  
Jim and Patti Dormer  
Scott and Susan Douglass  
The Driver Family  
Lisa A Dunn  
Jed and Alyce Englund  
Equitable \*  
Laura Ferrara  
David and Christine Finkelstein  
Molly Fitzgerald  
Charles and Ruth Ann Flynn  
Diane Fogarty  
Russell and Irene Friedman  
Roger and Patricia Frisch  
Richard and Deborah Fuller  
Kathy and Jim Furlong  
The Fusco Family  
Bill and Jean Gardner  
Steve and Tina Georgeou  
Alan and Pat Gould  
Sally and Tony Grassi  
Sarah and Noah Grayson  
Laurie Greene  
Margret and Matthew Greene  
Jerry and Mary Gail Gristina  
Anthony and Caroline Gulati  
Anne and Wayne Gura  
Alex and Kimi Hardej  
Lenore and Robert Herbst  
Mya Smith and Jeffrey Hershkovitz  
Mike and Janice Hess  
Greg Hoffman  
Martha and Philip Hoffman  
Travis Hood  
Karl and Leslie Hueglin  
Donald and Nancy Hulnick  
Bob and Beverly Iannucci  
Paul Iffland  
Richard and Virginia Irwin  
Kevin Jackson Family  
The Jeschke Family  
Anne Gostee Jovovic  
Carol Kane  
Richard Kearns and Kathryn Perkins  
Nathan Kellish  
John and Anne Kelly  
Rick Kenneally and Pat Hoeg  
Dee King  
The King Family  
Mr. and Mrs. William Kingston  
David and Linda Koch  
Peter Kosche  
Maurice Krasnow and Lorie Paulson  
Charissa and John Kronenberg  
Dawn and Mitch Ladenheim  
George Lamb  
Ada Lamont  
A. Stephen Lanza and Pamela Arciero  
Joseph and Kelly Lash  
Joan Lauten  
Wallace Lee  
Bruce and Karen Legan  
The Leopold Family  
Robert and Elizabeth Lerch  
Roy Levin and Jan Thomson  
Arthur and Ruth Linden  
Jennifer Longmire  
Ed and Jan MacEwen  
Lindsey Mackay  
Catherine and Joseph Magnano  
Lisa Mannix

\* Employer Matching Gift

Arley and Gabe Carr-Harris  
Bill and Lisa Caswell  
Debbie and Greg Chann  
Chevron \*  
Bob and Robin Como  
Jerome and Judith Cook  
David and Lucia Cross  
Dana Creanga  
Drum Hill Chapter DAR  
Keith and Jennifer DeAngelis  
Matthew Dellapina  
David and Marjorie Deptereos  
The DiCenzo Family  
Jim and Patti Dormer  
Scott and Susan Douglass  
The Driver Family  
Lisa A Dunn  
Jed and Alyce Englund  
Equitable \*  
Laura Ferrara  
David and Christine Finkelstein  
Molly Fitzgerald  
Charles and Ruth Ann Flynn  
Diane Fogarty  
Russell and Irene Friedman  
Roger and Patricia Frisch  
Richard and Deborah Fuller  
Kathy and Jim Furlong  
The Fusco Family  
Bill and Jean Gardner  
Steve and Tina Georgeou  
Alan and Pat Gould  
Sally and Tony Grassi  
Sarah and Noah Grayson  
Laurie Greene  
Margret and Matthew Greene  
Jerry and Mary Gail Gristina  
Anthony and Caroline Gulati  
Anne and Wayne Gura  
Alex and Kimi Hardej  
Lenore and Robert Herbst  
Mya Smith and Jeffrey Hershkovitz  
Mike and Janice Hess  
Greg Hoffman  
Martha and Philip Hoffman  
Travis Hood  
Karl and Leslie Hueglin  
Donald and Nancy Hulnick  
Bob and Beverly Iannucci  
Paul Iffland  
Richard and Virginia Irwin  
Kevin Jackson Family  
The Jeschke Family  
Anne Gostee Jovovic  
Carol Kane  
Richard Kearns and Kathryn Perkins  
Nathan Kellish  
John and Anne Kelly  
Rick Kenneally and Pat Hoeg  
Dee King  
The King Family  
Mr. and Mrs. William Kingston  
David and Linda Koch  
Peter Kosche  
Maurice Krasnow and Lorie Paulson  
Charissa and John Kronenberg  
Dawn and Mitch Ladenheim  
George Lamb  
Ada Lamont  
A. Stephen Lanza and Pamela Arciero  
Joseph and Kelly Lash  
Joan Lauten  
Wallace Lee  
Bruce and Karen Legan  
The Leopold Family  
Robert and Elizabeth Lerch  
Roy Levin and Jan Thomson  
Arthur and Ruth Linden  
Jennifer Longmire  
Ed and Jan MacEwen  
Lindsey Mackay  
Catherine and Joseph Magnano  
Lisa Mannix

Sophie and Vincent L Marshall  
David and Kelly McCarthy  
Beth McFadden Levenherz  
Kenneth Meister and Laurie Shahon  
The Meyer Family  
Alan Michaels  
John Mksad  
Lauren Mody  
Nick and Liz Mohr  
Alice C Morgan  
Louis Morrone  
Ray and Gail Moskow  
Nate Nevas and Leslie Radel  
Nita Nordgaard  
Andrew and Lauren Patterson  
The Paxton-Lawrence Family  
The Perakis Family  
Zelie and Carl Pforzheimer  
Justin Phillips  
John and Frida Piazza  
John and Sarah Pinkham  
Pledgeling Foundation \*  
Andrew and Kim Purcell  
The Ray Family  
The Rinaldi Family  
David Rintoul and Wendy Kerner  
Florence Keiser Romanov  
James and Vida Rothschild  
Beth and Donald Rowley  
S & P Foundation \*  
Mr. J. Sale and Ms. J. Craven-Griffiths  
Rommie Samai  
Richard and Theresa Sanford  
Chris and Beth Schellhorn  
Mr. and Mrs. Warren L Serenbetz Jr.  
The Shames Family  
Michael and Marilyn Shay  
Elaine and Day Shields  
Howard and Theresa Shimmel  
Raymond Sidhu  
Kit and Nancy Smith  
Jim and Betsy Snedecker  
The Peter Taylor Family  
Ian Tesar  
Sharon Thawley  
Lynne Tomeny  
The Torkelsen Family  
The Torpe Family  
Alan and Rosemary Varade  
Donald and Rose Marie Verrilli  
Jimena A Vignola  
Gary and Sheila Wakoff  
Hollis Warren  
Michael Waskom  
Mr. and Mrs. Michael Weiss  
Sam and Allison Wiley  
Madeleine Wilken  
The Wiltamuth Family  
John and Cindy Wiseman  
Roxane Witke  
Sandy and Erin Woolard  
Richard and Jiraporn Ziegler  
Wayne and Janet Zuckerman

### MEMBER - \$50 - \$99

Arch Companies \*  
Frank Baggio  
Joe and Barbara Bear  
Neal Brodsky and Judy Gottlieb  
Gordon Dailey  
Ian Edwards  
Factset \*  
Colleen and Scott Fawcett  
Dawn Dahl and Paul Freitas  
Givinga Foundation Inc  
Victoria Green  
Jade Hobson  
John and Kathleen Kalamarides  
Annette and Richard Kaye  
Jennifer Knapp  
Vijay Kumar  
Robert and Carol Lenihan  
Laura Macaluso  
Inge Maerowitz

Robert and Marcia Marafioti  
Linnea Martin  
Barbara and Bill Meehan  
Gail and Melvin Minthorn  
Anonymous  
Dan and Cara O'Neill  
Mary Otccka  
Del Overby  
Alison and Chris Perry  
Phillips Van Husen- PVH \*  
Jerry and Susan Rappaport  
Patricia Reber  
William and Elizabeth Reiss  
Jennifer Ringelheim  
Jane and Gregory Rudolph  
Gregory Ruhnow  
Beth A. Schneider  
Mr. and Mrs. Schott  
Doug and Sylvia Smith  
UBS \*  
Pat and Fred Wernig  
Michael and Meryll Wolfman  
Lisa and David Zappaterrini

### SUPPORTER - UP TO \$49

Amazon Smile \*  
Carlo Astrologo  
Bright Funds \*  
Philip and Linda Cannella  
Blake Claridge  
Lizzy Coursen  
Lora Cuff  
Douglas Davison  
Shqipe Day  
Courtney Dishian  
Douglas Dreyer  
Linda Fairchild  
Emily and Michael Faro  
Christopher Foster  
Richard Frostig  
Timsy Gandhi  
Yang Gao  
Patrice Gillespie  
Sarah Grunin  
Annie Hartigan  
Jenna Hasselkus  
Derek Hitchinson  
Jody Holmes  
The Torpe Family  
Alan and Rosemary Varade  
Donald and Rose Marie Verrilli  
Jimena A Vignola  
Gary and Sheila Wakoff  
Hollis Warren  
Michael Waskom  
Mr. and Mrs. Michael Weiss  
Sam and Allison Wiley  
Madeleine Wilken  
The Wiltamuth Family  
John and Cindy Wiseman  
Roxane Witke  
Sandy and Erin Woolard  
Richard and Jiraporn Ziegler  
Wayne and Janet Zuckerman