



WILTON LAND TRUST

Protecting Wilton's Natural, Scenic,
and Historical Landscapes

STAY CONNECTED


WWW.WILTONLANDTRUST.ORG

P.O. BOX 77

WILTON, CT 06897

(800) 983-3552

INQUIRY@WILTONLANDTRUST.ORG

 This report is printed on partially recycled paper.

“

Whether you plan on spending decades in Wilton, or are living here for only a short time, stop to think about how different your experience would be without the work done by the Wilton Land Trust.

There'd be no well-maintained trails for hiking; no one would be helping to restore the delicate balance required to protect and promote native plants and animals; your children or grandkids wouldn't be enjoying the rich educational programs offered, which make learning about the environment fun and hands-on.

We can help promote a more sustainable planet by giving generously to this organization. Without your support, everyone ... now and into the future ... will lose so much of what makes Wilton a very special place to call "home."

*-Mark & Linda Rubinstein,
WLT Annual Members*



WILTON LAND TRUST

2023 ANNUAL REPORT



THE PRESIDENT STEPHEN H. WHITE



I am looking out my window and watching bees and butterflies flying around the meadow across the street. This pristine meadow is there because the previous owner deeded it to the Wilton Land Trust to keep it wild in perpetuity. Perpetuity is a long time, yet had they not done this, the meadow may have

become a housing lot as so many in Wilton have. It takes foresight to understand this and a biding interest to make the commitment to set aside land in its natural state for future generations. Our job is to think long-term.

This summer, we finally cleared the hurdles of the Town of Wilton Planning and Zoning Commission. We were approved to complete the reconstruction of the antique barn at 183 Ridgefield Road, create parking and reconfigure the driveway, add a demonstration garden, and introduce pathways and patios. This has taken longer than we imagined, but I think the result will be worth the wait. You are going to love it.

Over the summer, important work continued through a range of projects. Our Executive Director, David McCarthy, has had the help of a wonderful College intern named Alessia Cawley. We have redrawn our Stewardship Committee under the leadership of Chairperson Marlen Clark and reworked our intern roles under the leadership of Judy Kline Venaleck, our Stewardship Programs Manager. Wallace Lee completed a comprehensive mapping project, organizing our maps and land records. David McCarthy has created another blockbuster fall season of programming for kids, parents, volunteers, and scouts.

The Land Trust is becoming an exciting place to be. Please come and join us.

Stephen H. White
President

THE EXECUTIVE DIRECTOR DAVID E. MCCARTHY



As I look back on this year, I'm truly grateful for your unwavering dedication and support. 2023 brought remarkable growth and achievements for the WLT, all thanks to you. The generosity of our annual members, the dedication of our volunteers, and the steadfast commitment of our supporters and program partners enable us to safeguard biodiversity and bring nature closer to

the hearts of many. Thank you!

At the heart of our mission lies the passion for connecting people with nature, and thanks to your support, this year was a big success. We formed strong community partnerships, restored habitats, hired staff, released rehabilitated wildlife, expanded our intern team, and doubled down on our commitment to providing enriching community programs. Our collective achievements fill my heart with joy, and I look forward to the exciting experiences we will share.

Behind the scenes, our Board of Trustees has shown exceptional dedication, governing, guiding, and growing the WLT with wisdom and care. Their efforts have advanced our mission and resulted in transformative projects like developing the Chestnut Meadows Nature Preserve and building the Daniel Offutt Barn. Working with WLT's Board to progress conservation in Wilton is a privilege. I eagerly anticipate aiding their strategic planning sessions to develop a comprehensive plan to drive our initiatives in the years ahead.

This year, our trail revitalization initiative took flight, improving access, safety, and markings along our extensive trail network. To connect more people with nature, we collaborated with volunteer Wallace Lee and meticulously mapped Wilton's open spaces and trails, resulting in an online open space and trail map accessible on the WLT's website. I encourage you to explore this community resource.

Because of you, I'm able to connect people with the wonders of nature and restore native habitats across our remarkable town, and I am thankful beyond words. Working within our incredibly supportive, compassionate, and conservation-minded community is a blessing I hold dear.

As we move forward, I am excited for our fall programs, where we will continue to learn, connect, and grow together. Thank you for being an integral part of our journey. Here's to a future of continued growth, shared experiences, and the joy of connecting people with the beauty of the natural world.

With warm regards and sincere appreciation,
David McCarthy
Executive Director

WE ARE WILTON'S LAND TRUST



2023 American chestnut tree planting at Chestnut Meadows Nature Preserve

MISSION

The Wilton Land Trust protects Wilton's unique natural, scenic, and historical landscapes through conservation and stewardship. The WLT is a community-focused land trust dedicated to preserving land for open space, protecting biodiversity, and promoting environmental awareness and education.

TRUSTEES

At the core of our organization lies a vibrant Board of volunteer Trustees, the guiding force steering the organization toward a sustainable and impactful future. By diligently overseeing the organization's financial health, they secure the necessary resources to advance the WLT's mission and strategic vision, playing a pivotal role in ensuring the WLT's continued success in making a positive difference in the Wilton community.

In February of 2023, the WLT welcomed its newest Trustee, Lori Fusco. A remarkable asset to the WLT, her contributions have helped propel the nonprofit organization to new heights.

MEMBERS

As a member-based nonprofit organization, we cherish our annual members' invaluable role in driving our critical mission forward. Their charitable contributions and unwavering support serve as the lifeblood that sustains our efforts.

VOLUNTEERS

The WLT relies on the invaluable contributions of its dedicated volunteers, who play a vital role in ensuring the safety and accessibility of WLT's trails. The backbone of our organization, WLT volunteers actively engage in various working committees that advance the WLT's mission.

CONSERVATION

By conserving, maintaining, and enhancing precious open space in Wilton, the WLT plays a vital role in protecting threatened species, preserving wildlife habitats, and mitigating the impacts of climate change. Our conservation efforts contribute to creating uninterrupted wildlife habitats, safeguarding water quality, improving air quality, and preserving the town's historical landscapes and rural character. To achieve our goals, we diligently raise funds to acquire land outright and collaborate closely with landowners to establish options such as bequeathment, donation, or implementing conservation easements on their properties.

TRAIL MANAGEMENT

WLT's stewardship committee, interns, staff, and volunteers manage its expansive trail network for people to explore and experience something rare, extraordinary, or inspiring in nature. Hiking, or strolling through nature, offers a plethora of benefits, including enhanced mental well-being, brain stimulation, self-reflection, escape, learning, socializing, and physical exercise.

HABITAT RESTORATION

Driven by our profound commitment to Wilton's environment, we passionately restore native habitats across our vast expanse of 119 parcels, spanning over 840 acres, to create a greener, healthier future for Wilton and its wildlife. Our collective efforts are focused on creating a vision of thriving native wildlife habitats, abundant pollinator havens, safeguarded watercourses, rejuvenated forests, and heightened environmental awareness.

COMMUNITY PROGRAMS

Throughout the past year, we diligently crafted, hosted, and collaborated on an array of captivating nature-focused activities, from recreational pursuits to educational experiences. Our ultimate goal is to connect people and families with nature through unforgettable outdoor adventures.

“ASML takes pride in our collaboration with the Wilton Land Trust, championing our commitment to green communities. Our philanthropic and volunteer support of the WLT actively contributes to enriching the community where our employees live, work, and play. Moreover, our partnership serves a profound purpose in safeguarding the natural beauty of Wilton, ensuring its preservation for the prosperity and enjoyment of future generations.”
-ASML, WLT Annual Member & Program Partner

EXECUTIVE DIRECTOR
David E. McCarthy

PRESIDENT
Stephen H. White

VICE PRESIDENT
Craig E. Johnson

VICE PRESIDENT
Roger R. Valkenburgh

SECRETARY
Robert E. Sollmann Jr.

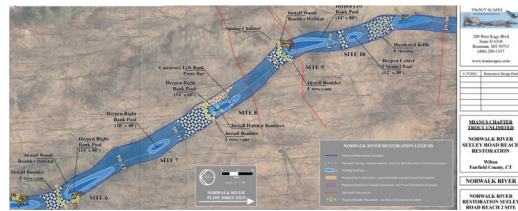
TREASURER
Michael E. Foster

TRUSTEES
Brett D. Amero
Scott M. Bogan
Jay M. Dulberg
Christina Duncan
Lori Fusco
Kaki Hughes
William L. Maxwell
Justin Phillips
Mark Rice

TRUSTEES EMERITUS
Anthony P. Grassi
Thomas M. Sinchak

RESTORING NATIVE HABITAT ENHANCING BIODIVERSITY ACROSS OUR PRESERVES

We're actively restoring native wildlife habitat, a crucial step in preserving biodiversity and supporting wildlife populations. Across our preserves, with support from our community and volunteers, we're removing invasives and creating healthier ecosystems for wildlife to flourish and for people to explore.



NOTABLE WLT NATIVE HABITAT RESTORATION PROJECTS:

NATIVE TROUT HABITAT RESTORATION

In partnership with Trout Unlimited.

MEADOW HABITAT RESTORATION

In partnership with ASML.

BIRD SANCTUARY AND BLUEBERRY FIELDS

A WLT stewardship effort at WLT's Scheinks Island Nature Preserve.

FORREST RESTORATION

A WLT stewardship effort at WLT's Harrison-Smith Nature Preserve.

RELEASING REHABILITATED WILDLIFE INTO OUR NATURE PRESERVES



In the Spring and Fall of 2023, WLT Trustees, members, and elected officials watched in celebration as two rehabilitated Barred Owls and Red-tailed Hawks were released back into the wild. In partnership with Wildlife in Crisis, the majestic animals were released at WLT's Nick Parisot Memorial Trail Head: accompanied by a celebratory campfire, hors d'oeuvres, and libations.

STEWARDED OUR LANDS AND TRAILS ENGAGING OUR COMMUNITY IN OUR WORK

The WLT manages its diverse portfolio of preserves and trail networks ranging from less than an acre to over fifty. Each parcel conserves a variety of habitats, encompassing meadows, wetlands, forests, rivers, streams, vernal pools and ponds. By means of Stewardship Sundays, Interns, and the passionate Wilton community, we work to improve trail accessibility, manage our meadows, enhance our forests, repair our historic stone walls, and steward our open space nature preserves.



WLT'S STEWARDSHIP PROGRAMS MANAGER: NEW STAFF: JUDY KLINE VENALECK

In 2023, Judy was hired to manage our vast trail networks, nurture our native plantings, and lead and expand our internship program fostering youth-led land stewardship projects across the trust's network of 840+ acres.



Walking the Wilton Land Trust's trails is an enjoyable physical activity that also uplifts one's spirits and provides a living link to our past. We need to keep conserving our beautiful open spaces.

-Paul Evanson, WLT Annual Member

STEWARDSHIP SUNDAY SERIES: COMMUNITY VOLUNTEER WORKDAYS FOR ALL AGES



Stewardship Sundays is a free hands-on educational program designed to empower individuals of all ages to make a tangible difference in their communities. For five Sundays in the Spring and Fall, participants devote just 1.5 hours on a Sunday to contribute towards the well-being of their environment by enhancing trails, restoring biodiversity, and maintaining our cherished natural spaces.

STRENGTHENING WLT'S STEWARDSHIP COMMITTEE: MAINTAINING AND ENHANCING OUR TRAILS AND PRESERVES

With an unwavering commitment, the WLT is propelling its endeavors to elevate trail safety, restore biodiversity, and foster thriving native habitats. The WLT's stewardship efforts are driven by two integral departments: the passionate Stewardship Programs Manager, Judy Kline Venaleck, and her dedicated team of interns, alongside our growing Stewardship Committee, led by Marlen Clark, Committee Chair.



PARTNERING FOR THE ENVIRONMENT: BUILDING A STRONGER NATURE-CENTERED COMMUNITY



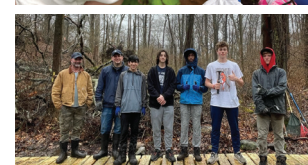
ASML and the WLT continue their partnership to restore biodiversity and enrich the Wilton community.



WILTON GARDEN CLUB and the WLT have joined forces to create, implement, and successfully pilot a program for collecting native seeds to ensure genetic robustness and vitality for the future.



GIRL SCOUTS: The WLT and Wilton Girl Scout Troop 50792 (3rd graders) planted 70+ native wildflowers at Land Trust's Schenck's Island to boost biodiversity and support pollinators.



BOY SCOUTS: The WLT proudly partnered with several Scout leaders for impactful Eagle Projects, building boardwalks and kiosks that enhance hiking on WLT trails.



In the eight years that we have lived in Wilton, we have appreciated WLT's growing commitment to education and consistent opportunities to volunteer and get involved: Stewardship Sundays, storytimes for families, raptor releases, turtle events, bird walks, sunset hikes and informative talks. It's all about preserving, appreciating, learning, pausing to enjoy and sharing, now and in the future.

-Jennifer and Maurizio Morello, WLT Annual Members

THANK YOU 2023 VOLUNTEERS!

Thanks to your incredible support, we're advancing our mission, safeguarding water quality, maintaining our trail networks, and providing a haven for people to explore and wildlife to thrive!

425+ VOLUNTEERS!
2100+ HOURS
450+ NATIVE TREES PLANTED!

The thriving health and accessibility of our preserves rely on our membership's unwavering support and our volunteers' dedication. Embark on a meaningful journey with us by embracing our vital mission. Your support positively impacts the Wilton community and plays a pivotal role in safeguarding our natural resources.



For me, it's all about creating awareness of and connecting people to nature that is all around us - a fundamental tenet of the Wilton Land Trust which is why I am not only a supporter of their mission but also contribute to their work by leading birding walks.

-Joe Bear, WLT Annual Member and Program Partner

PROGRAMMING

CONNECTING PEOPLE WITH THE WONDERS OF NATURE

The best way to experience nature is to get out there and enjoy it, and our diverse range of in-house and community co-hosted programs bring people closer to the outdoors. Over the past year, we have actively developed and collaborated on nature-focused recreational, educational, and experiential programs for people of all ages to celebrate and cherish the beauty of the natural world.

STEWARDSHIP SUNDAYS

We're restoring native wildlife habitat, maintaining trails, and improving the environment on our community volunteer workdays.

TREKKING TOGETHER



We're taking folks on invigorating and educational hikes across the beautiful landscapes of Wilton in partnership with the Woodcock Nature Center.

BOOKS & A BLANKET



We're connecting kids with nature, books, and recycling in partnership with Wilton Library and Wilton Go Green.

TURTLE TIME



We're teaching people about the amazing lives of turtles and tortoises in partnership with TheTurtleRoom.

POETRY IN THE PRESERVE



We're blending nature and art in partnership with the Wilton Library and the CT Poetry Society.

WELLNESS WALK

We're combining nature, exercise, and health in partnership with Stay at Home in Wilton.

BIRDS & BINOCULARS



We're connecting people with birds and the outdoors in partnership with an expert birder, environmentalist, and Wilton resident, Joe Bear.

BIRDS OF PREY



We're bringing the mysterious lives of New England Raptors front and center in partnership with the Sharon Audubon Center.

SUNSET LANTERN WALK



We're exploring meadows at twilight with our community at our annual lantern-lit hike.

CREATE & CONNECT



We're instructing and inspiring painters with a plein-air painting workshop in partnership with the Friends of Weir Farm.

LEADERSHIP

NURTURING THE FUTURE GENERATION OF ENVIRONMENTAL LEADERS

Wilton Land Trust's Internship Program provides opportunities for students to broaden their understanding of conservation science, participate in land management, and gain valuable skill sets. The dual semester program uses many learning modalities to help students draw connections between what they know and what they are learning. These experiences serve as inspiration for the youth of Wilton to engage actively within their community and foster the growth of the next generation of environmental leaders

WLT'S 2023 HIGH SCHOOL & COLLEGE INTERNS



AFROZ ALI
HIGH SCHOOL INTERN

Afroz joined the WLT in 2022. He is a junior at Wilton High School and part of the Wilton High School cross-country team.

"I am passionate about wildlife and eager to learn more about the environment I live in."



ANNA MORELLO
HIGH SCHOOL INTERN

Anna joined the WLT in 2022. She is a Senior at Wilton High School who's interested in Environmental Sustainability.

"I am so excited to have the wonderful opportunity to intern at the Wilton Land Trust!"



JILL ROBERTS
HIGH SCHOOL INTERN

Jill joined the WLT in 2021. Having graduated from WHS in May 2023, she is now a freshman at Duke University, pursuing studies in marine science and conservation.

"I found my time with the WLT to be educational, inspiring, and rejuvenating."



ETHAN LIPPER
HIGH SCHOOL INTERN

Ethan joined the WLT in 2022. He is a Senior at Wilton High School who enjoys spending time outdoors.

"By interning at the Wilton Land Trust, I hope that I can help conserve and improve the environment in which I currently live."



ALESSIA CAWLEY
2023 COLLEGE SUMMER INTERN

Alessia, a junior at Colgate University studying Environmental Studies and Political Science, grew up in Wilton. Her deep environmental passion fuels her aspirations to pursue Environmental Justice/Law after graduation.

"Working with the WLT has been an amazing collaborative experience. I had the opportunity to learn from many passionate individuals, and I gained invaluable professional experience."

ZACH SCHWARTZ
2023 COLLEGE SUMMER INTERN

Zach, a freshman at the University of Vermont School of Environment and Natural Resources, grew up in Wilton.

"I had a great time maintaining the trails and Land Trust properties around town, and I hope that people will take advantage of the beautiful trails the Land Trust has to offer."



RECOGNIZING ENVIRONMENTAL LEADERSHIP: WILTON HIGH SCHOOL ACADEMIC AWARDS ASSEMBLY

2023 JUNIOR BOOK AWARD



ANNA MORELLO

A shining example of outstanding environmental leadership and dedication to the Wilton community, Anna was honored with the prestigious WLT 2023 Junior Book Award by David McCarthy, Executive Director of the WLT.

2023 E. DAN CAPPEL SENIOR SCHOLARSHIP AWARD OF \$1,500



JILL ROBERTS

For her exceptional leadership and unwavering dedication to preserving Wilton's biodiversity, Jill Roberts received the esteemed WLT's 2023 E. Dan Cappel Senior Scholarship Award of \$1,500 David McCarthy, the Executive Director of the WLT, proudly presented her with this honor.

2023 JUNIOR BOOK AWARD



ETHAN LIPPER

Acclaimed for his exceptional environmental leadership and steadfast dedication to the Wilton community, Ethan was honored with the esteemed WLT 2023 Junior Book Award by David McCarthy, Executive Director of the WLT.

CONNECTING PEOPLE WITH THE GREAT OUTDOORS

ANNUAL MEETINGS: LEARN MORE ABOUT YOUR LAND TRUST

2023

At the WLT's 58th Annual Meeting, we commemorated major milestones and another year of advancing our critical mission. The evening's highlight was our esteemed guest speaker, Geordie Elkins of Highsted, who eloquently emphasized the significance of fostering native habitats.

2024

You are cordially invited to the 59th Annual Meeting of the WLT, where we will hear from our President, Treasurer, Committees, and Executive Director. The meeting will be held in person at the Wilton Library on Wednesday, February 28th, with the members meeting at 6:00 pm, and the public meeting at 7:00 pm. The highlight of the evening is our guest speaker, Amy Barnouw, Director of the Fairfield Region of the CT Audubon Society. She will speak about Connecticut's amazing wild-life and conservation efforts. We invite you to register at wiltonlandtrust.org.

CHESTNUT MEADOWS

OPENING THE PRESERVE:

In August of 2023, Wilton P&Z granted us our Special Permit to transform Chestnut Meadows into a magnificent nature center. Over the coming year, we're making progress on site enhancements, like a new driveway, an eight-car parking lot, a visitor kiosk, native wildflower gardens, enchanting walkways, and inviting patios. While completion timing isn't certain, we aim to finish the majority of the work by year's end.



AMERICAN CHESTNUT TREE ORCHARD:

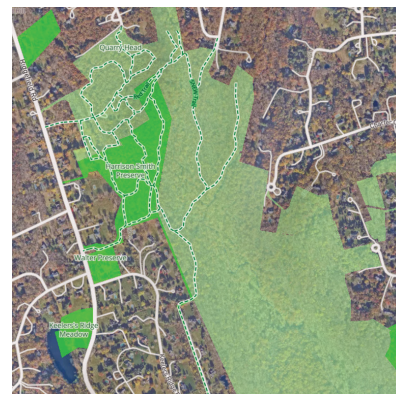
In 2021, we partnered with the American Chestnut Foundation to restore the chestnut tree and establish our orchard. In 2023, aided by dedicated volunteers, we planted 20 more trees, bringing the total to 60. Jill Roberts, WLT Intern, managed the orchard over the summer, nurturing the trees to help cultivate a blight-resistant variety that could one day reforest its original habitat from Maine to the Appalachians.

FINISHING THE DANIEL OFFUTT BARN:

The WLT Building Committee is collaborating with architect Rob Sanders and builder David Gengo to finalize the restoration of the 19th-century post and beam barn at Chestnut Meadows. This stunning architectural gem boasts vaulted ceilings, an expansive meeting room, two lavatories, and a small office. It will be a versatile meeting space for WLT and its educational programs.

WLT'S ONLINE OPEN SPACE & TRAILS MAP

To foster nature connections, the WLT partnered with community volunteer Wallace Lee to map all of Wilton's open spaces and trails. Together, we've created an advanced online map, making all of Wilton's trails easily accessible on WLT's website.



The WLT promotes nature connection, recognizing its positive impact on mental and physical well-being. Explore our new map for easy trail discovery, and immerse yourself in Wilton's picturesque landscapes. Experience outdoor adventures with the WLT – begin your hike today!

www.wiltonlandtrust.org

ENGAGING THE WILTON COMMUNITY

ENGAGING THE COMMUNITY THROUGH OUR CRITICAL MISSION

OUTREACH

Community and conservation are connected. In the face of an increasingly critical mission, we're actively engaging the Wilton community to galvanize support and forge strong partnerships. We drive engagement through our diverse channels: eNewsletters, talks, programs, social media, mailings, hikes, and more. Subscribe at wiltonlandtrust.org.

GET INVOLVED

Together, we can safeguard Wilton's environment, foster community-based conservation, and advance WLT's critical mission. There are countless ways you can help; reach out to get involved: inquiry@wiltonlandtrust.org.



David McCarthy - WLT Executive Director

ENRICHING WILTON THROUGH CONSERVATION: A MULTIFACETED IMPACT

In the heart of Wilton, your land trust is preserving open spaces, safeguarding biodiversity, building community, and nurturing young minds. As the WLT advances its mission, the positive impacts reverberate across the natural world and the people it serves.

FORGING A BOND WITH NATURE AND COMMUNITY:

The WLT is a living testament to the connection between Wilton and nature. Our programs and preserves offer opportunities to learn, explore, relax, and refresh.

EMPOWERING THE FUTURE:

The WLT offers high school and college students professional internship opportunities. Our newly hired Stewardship Programs Manager and recently introduced Wilton High School National Honors Society Ambassador Program further magnifies the WLT's ability to inspire the next generation of environmental leaders.

STRENGTHENING PARTNERSHIPS FOR RESILIENCE:

We understand that the road to a sustainable future is paved with partnerships. By partnering with Wilton schools, businesses, and organizations, we're amplifying our impacts and strengthening community ties.



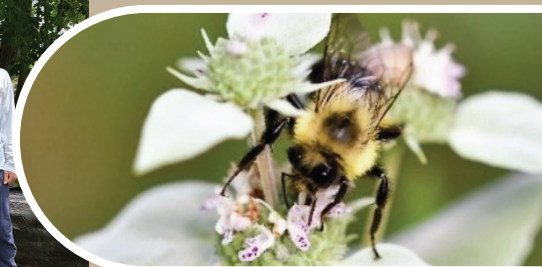
PLANTS MATTER:
NURTURE NATIVE NATURE



Pollinator-friendly landscapes encompass diverse native plants, guaranteeing year-round pollen, nectar, habitat, and host plant availability.



Clustered Mountain Mint (Pycnanthemum muticum) stands as an irresistible bloom, drawing in the American Bumble Bee and an array of other vital pollinators. This aromatic perennial flowers for months starting in June, and according to a pollinator trial done by Penn State, College of Agricultural Sciences, mountain mint is the most popular pollinator-friendly native plant.



The American bumblebee (Bombus pensylvanicus) population has plummeted by 90% since the year 2000. Once the most frequently spotted bee in the United States, it pollinates our crops and nourishes our ecosystems.

A LOOK AHEAD:

AS THE WLT CONTINUES TO WRITE ITS STORY, THE NARRATIVE UNFOLDS WITH ENRICHED PROGRAMMING, EXPANDED STAFF, AND DEEPER COMMUNITY ENGAGEMENT.

SUPPORTING OUR CRITICAL MISSION

YOUR SUPPORT = YOUR IMPACT:
OUR EFFORTS TO CREATE POSITIVE CHANGE IN WILTON RELY ENTIRELY ON THE SUPPORT OF OUR AMAZING MEMBERS.

SHAPE LASTING OUTCOMES WITH:



CORPORATE PARTNERSHIP



ANNUAL MEMBERSHIP



ESTATE PLANNING

GIFTS OF:



LAND OR EASEMENTS



APPRECIATED ASSETS



PLANNED GIFTS



Bob Wallace, WLT Stewardship Committee Member

WLT ENDOWMENT FUND

Help sustain our critical mission long into the future by including the WLT Endowment Fund in your long-term plans.

CREATE YOUR CONSERVATION LEGACY

Your planned gift is an opportunity to realize your conservation vision and contribute to open space in Wilton. To establish your enduring legacy, contact our Executive Director, David McCarthy, at (800) 983-3552.

THANK YOU: A MESSAGE OF GRATITUDE

2022-2023 WLT ANNUAL MEMBERS

Your generous annual membership contributions empowered us to take on transformative initiatives, from improving trails to preserving open space, restoring ecosystems, and fostering community engagement. Thank you!

SUPPORTING OUR MISSION

You made it all possible! We extend our heartfelt gratitude to our 2022-23 annual members, volunteers, partners, and supporters. Your unwavering support propelled our mission forward. Thank you!

For the fourth consecutive year, 2022-2023 shines as the highest unrestricted charitable giving on record! We're truly blessed to have such generous members committed to our Mission. Thank you!

WLT MEMBERS MAKE A DIFFERENCE

Witnessing the tangible impact of your support is truly rewarding. WLT members contribute directly to the future of Wilton's natural beauty and its community.

DONATE TODAY

It's an exhilarating time to be part of the WLT! Together, we're making a remarkable difference in Wilton. Donate now and be a force for positive change.

MEMBERSHIP IS A BREEZE

Make your secure online or mailed donation today to put your support into action and become a 2023-2024 annual member. The WLT is a 501(c)(3) non-profit, most charitable donations are tax-deductible. Membership cycles run from September to August.

DISCOVER MEMBERSHIP REWARDS

WLT's Annual Members are kept close to the impacts their generous contributions have on Wilton's environment and community. Become an annual member, enjoy regular updates, eNewsletters, and invites to our programs and exclusive special events.

ANNUAL MEMBERS

2022 - 2023

THANK YOU FOR BEING THE DRIVING FORCE BEHIND OUR COMMUNITY IMPACTS!

PATRON - \$250 - \$499

Anonymous
The Albanese Family
John D. Ambler
The Anastasia Family
David and Betsy Bell
Joseph and Sue Berland
Mariann and Jon Bigelow
Gladys S. Blundin
Carol Boehly
Bill and Nancy Brautigam
Gil and Patricia Bray
Michael Conway
Donna and Michael Correale
Keith and Laura Coutant
Alper and Asli Daglioglu
Jennifer and Geody Davatzes
Nancy and Karl Dolnier
Diane Berenbaum and Rudy Escalante
Michelle and Doug Fechter
Joseph J. and Ann R. Fiteni
Anthony Fouracre and Mari Okie-Fouracre
The Fusco Family
Lila Griswold
Annie Hartigan
Chris and Susan Jackson
Jessica and Paul Joy
Michael and Olga Kagan
David and Cynthia Keating
Rick Kenneally and Pat Hoeg
John and Brittany Kowalski
Maurice Krasnow and Lorie Paulson
Harold and Anne Low
Frank Mabley
Mastercard*
Tim and Molly McLaughlin
Donna Merrill
Jane Mitchell
Jason and Casey Monteleone
Catherine Munera
Maura and Matthew O'Halloran
Joseph and Nancy Pantoliano
Sharon Petro
Saul and Anne Pollack
Beverly and Greg Rodiger
Bob and Maya Rodriguez
Jeffrey and Laura Runge
The Rusnok Family
Timothy and Barbara Schmidt
Lee Ann and Tom Schneider
Tiffany Shelton ^
Raymond Sidhu
Tom and Marla Sinchak
Sutka Family
Village Market
Robert Wallace
David Wecker & Julie Rudnicki
Wilton Hardware

SUSTAINER - \$100 - \$249

William and Susan Abrams
Inta and Taggart Adams
Brett and Coleen Amero
The Andrews Family
Sandra Arkell
Bank of America*
The Bankowski Family
Verna and Chris Barrett
Jane and Ed Bescherer
William and Kathleen Bishop
Sophie Black
John and Colleen Boepple
Bruce and Regina Borden
Madeleine Bourdeaux
Kathleen and Bill Brennan
Carolyn Brewer
David and Karin Brooks
Minter and Connie Brown
Robert and Debra Browne

Joe Bruno
Greg and Patricia Caggainello
California Community Foundation*
Claire Camelio
Bill and Lisa Caswell
Debbie and Greg Chann
Winifred Chesley
Marlen S Clark
David and Lucia Cross
Kim Craig
Dana Creanga
Bruce and Susan Cruikshank
Charles E. Cunningham
John and Kristina Curran
Ann and Jonathan Dachs
Gordon Dailey
David and Marjorie Dephtereos
Richard and Claire Dineen
Scott and Susan Douglass
The Driver Family
Arthur and Jeanne Dsouza
Lisa A Dunn
Charles and Ruth Ann Flynn
Christopher Foster
Russell and Irene Friedman
Richard and Deborah Fuller
Jennifer & Matthew Gabrielson
Steve and Tina Georgeou
Alan and Pat Gould
Sally and Tony Grassi
Laurie Greene
Jerry and Mary Gail Gristina
Anthony and Caroline Gulati
Anne & Wayne Gura
Alex and Kimi Hardej
Thom and Sally Healy
Nancy Helmig
Mike and Janice Hess
Jade Hobson
Greg Hoffman
Philip and Martha Hoffman
Ed and Judy Hoffstatter
Travis Hood
Bob and Beverly Iannucci
Richard and Virginia Irwin
Johnson Family
Anne Goslee Jovovic
Nathan Kellish
Dee King
The King Family
Mr. and Mrs. William Kingston
David and Linda Koch
Peter Kosche
Charissa and John Kronenberg
George Lamb
Dr. David Langseth
Katrina LaPenne
The Lash Family
Wallace Lee
The Leopold Family
Robert and Elizabeth Lerch
Roy Levin and Jan Thomson
Arthur and Ruth Linden
Christopher and Ann Lineberger
Jennifer Longmire
Malcolm and Jennie MacGregor
Catherine and Joseph Magnano
Lisa Mannix
Sophie and Vincent L Marshall
Ryan and TaraLeigh Masterson
Gloria and Gene Mauro
Beth McFadden Levenherz
Donna McKenna
Kenneth Meister and Laurie Shahon
The Meyer Family
Alan Michaels
The Mody Family
Alice C Morgan
Brian Murnane

Jonathan and Wendy Murphy
Dawn and Jeff Padovan
Kate Throckmorton and Rick Parisot
Andrew Patterson
The Paxton-Lawrence Family
Michael Pearson
Joan Pendergast
The Petroski Family
Justin Phillips
John and Sarah Pinkham
The Radle Family
Patricia Reber
David Rintoul and Wendy Kerner
Russ Robbins
Kathleen Rooney
James and Vida Rothschild
S & P Foundation*
Rommie Samai
Kathleen Sample
Chris and Beth Schellhorn
Zachary Schwartz
The Shames Family
Michael and Marilyn Shay
Howard and Terryanne Shimmel
Drew Alexander Silverstein
Kit and Nancy Smith
Spellman Family
Jerry and Beth Sprole
Synchrony Financial*
Ian Tesar
The Torkelsen Family
UBS*
Barbara Valk
The van Heyst Family
Alan and Rosemary Varade
Jimená A Vignola
The Wagner Family
Gary and Sheila Wakoff
Hollis Warren
Michael Wayland
Mr. and Mrs. Michael Weiss
Ernest A Wiegand
The Wiltamuth Family
Wilton High School Class of 1962
Roxane Witke
Sandy and Erin Woolard
Richard and Jiraporn Ziegler
Wayne and Janet Zuckerman

MEMBER - \$50 - \$99

ANONYMOUS
Joe and Barbara Bear
Benevity*
Ian Edwards
Jean Evans
The Farago Family
Dawn Dahl and Paul Freitas
Richard Frostig
Jody Holmes
Chris and Janet Karabin
Jennifer Knapp
Gene Leganza & Theresa Brady
Robert and Marcia Marafioti
Michael and Elizabeth Marcal
Linnea Martin
Barbara and Bill Meehan
Mary Ostocka
Del Overy
Alison and Chris Perry
Leanne Press
William and Elizabeth Reiss
Jennifer Ringelheim
Beth A. Schneider
Mr. and Mrs. Schott
John and Rachel Scott
Doug and Sylvia Smith
Jim and Betsy Snedeker
Susan Throckmorton and Sheryl Puletz
Dr. Dee Unterbach

Wendy Vickrey
Zeng Wang
Pat and Fred Wernig
Michael and Meryll Wolfman
Lisa and David Zappaterrini
Elliot and Janice Zelevansky
Mr. & Mrs. William Zoeller

SUPPORTER - UP TO \$49

Jackie Algon
Amazon Smile*
Frank Baggio
Jennifer Baltz
Jean Boland
Jessica and Matthew Brand
Derek and Kristina Burkholder
Campbell Soup Company*
Philip and Linda Cannella
Damien Chaussabel
Jillian Claridge
Megan Clark
Julie Cromwell
Frank and Barbara Dahm
Douglas Davison
Anne Deware
Melissa Ferguson
Candice Forey
Elisa Gomez
Eileen and Fiachra Grisewood
Amanda Harris
Hannah Hedge
Cassie Hess
Derek Hitchinson
Bridget Hughes
Donald and Nancy Hulnick
Amy Kesselman
Robert and Sally Kieffer
Bethany Kluberdanz
Jamie Lee
Robert and Carol Lenihan
Michelle Levinson
Alexis Louko
Dave Lowrie
Inge Maerowitz
Susan Mangino
Vanessa Martins
McKinsey & Company
Kirk Minnis
Gail and Melvin Minthorn
Linda Montanaro
Julia Mord
Nicole Moylan
Morgan Napier
Donald Offinger
Frank and Maurie O'Neill
Adriana Pagan
Jack Parascondola
The Paturynski Family
Maribel Perez Gavilan
Hope Plescia-Buchi
Justin Ramsteck
Claudia Reed
Molly Robertson
Gregory Ruhnow
Mike Schnitzer
Sara Smith
Laura Sullivan
Monika and Grzegorz Szydlowski
Esther Wegter
Helen Whitten
Madeleine Wilken
Wilton Woodworking
Zachary Yarnell
Olga Zargos-Traub
Mary Zwecker

LUMINARY - \$10,000 +

Paul and Carol Evanson Family Foundation
Daniel E. Offutt III, Charitable Trust
Mark and Linda Rubinstein

LEADER - \$5,000 - \$9,999

ASML
John and Mary Brock
Kaki and Barney Hughes
Craig Johnson and Kimberley Young
Jennifer and Maurizio Morello
Robert and Kathryn Sollmann
Chris and Catherine Stroup
The Henry Foundation
Roger and Ginny Valkenburgh

BENEFACTOR - \$2,500 - \$4,999

Mark Broach
Peter Brooks
Woodson and Christina Duncan
Jim and Ellen Kapustka
Craig and Suzanne Knutson
Stanley Kovak
Mark and Amy Rice
Robert and Carol Russell

CONSERVATIONIST - \$1,000 - \$2,499

Jane and Moses Alexander
Scott Bogan
Bright Funds*
Joanna Buchanan
Timothy and Laura Callahan
Douglas Cullen and Eva Pao
Dailykarma Foundation
Chris and Carol Dubrowski
The Fleitz Family
Janet and Michael Foster
Goldman Sachs*
Russell J. Handelman
Jeffrey Headden
Greg and Susan Hendrick
The Donald Bondy Lowy Family
James and Kim Mellin
John Miksad
Elizabeth and Gerald O'Connell
Per and Christina Onnerud
Al and Sue Ravitz
Andrea Riina and Rodney S
Jessica Skipper
Amanda Tafuro ^

STEWARD - \$500 - \$999

The Amadeo Family
Geoffrey and Lynn Ashworth
Emily and Steve Blass
Rob and Meg Campbell
John and Susan Christian
Thomas Clark
Daniel and Rebecca Darst
Judith Pushon and Jay Dulberg
Ken and Pam Fadner
Robert and Barbara Gault
Mya Smith and Jeffrey Hershkowitz
Brian Kannry and Danielle Denega
David McCraw
John and Sherry McReynolds
Betsy and Steve Pettit
The Ruffel Family
Mathias and Bonnie Rumilly
Rob Sanders Architects LLC
Carrie and Ben Sanders
The Smolenack Family
Marilyn and Saul Spilke
Lynne Tomeny
Turnover Shop of Wilton
Pankaj and Marianne Uppal
Stephen White

* Corporate Matching Gift ^ Gift-in-kind